

3002-3036 West Broadway

**BY-LAW NO. 10841**

**A By-law to amend  
Zoning and Development By-law No. 3575  
to rezone an area to CD-1**

THE COUNCIL OF THE CITY OF VANCOUVER, in public meeting, enacts as follows:

**Zoning District Plan Amendment**

1. This By-law amends the Zoning District Plan attached as Schedule D to By-law No. 3575, and amends or substitutes the boundaries and districts shown on it, according to the amendments, substitutions, explanatory legends, notations, and references shown on the plan marginally numbered Z-659 (a) attached as Schedule A to this By-law, and incorporates Schedule A into Schedule D, to By-law No. 3575.

**Uses**

2.1 The description of the area shown within the heavy black outline on Schedule A is CD-1 (558).

2.2 Subject to Council approval of the form of development, to all conditions, guidelines and policies adopted by Council, and to the conditions set out in this By-law or in a development permit, the only uses permitted within CD-1 (558), and the only uses for which the Director of Planning or Development Permit Board will issue development permits are:

- (a) Cultural and Recreational Uses, limited to Arcade, Artist Studio, Billiard Hall, Club, Community Centre or Neighbourhood House, Fitness Centre, Library, and Museum or Archives;
- (b) Dwelling Uses, limited to Dwelling Units in conjunction with any of the uses listed in this By-law;
- (c) Institutional Uses, limited to Child Day Care Facility and Social Service Centre;
- (d) Manufacturing Uses, limited to Jewellery Manufacturing and Printing or Publishing;
- (e) Office Uses;
- (f) Retail Uses, limited to Adult Retail Store, Farmers' Market, Furniture or Appliance Store, Grocery or Drug Store, Liquor Store, Public Bike Share, Retail Store, Secondhand Store, and Small-scale Pharmacy;

- (g) Service Uses, limited to Animal Clinic, Auction Hall, Barber Shop or Beauty Salon, Beauty and Wellness Centre, Cabaret, Catering Establishment, Laundromat or Dry Cleaning Establishment, Neighbourhood Public House, Photofinishing or Photography Laboratory, Print Shop, Repair Shop - Class A, Repair Shop - Class B, Restaurant - Class 1, Restaurant - Class 2, School - Arts or Self-Improvement, School - Business, School - Vocational or Trade, and Wedding Chapel;
- (h) Utility and Communication Uses, limited to Public Utility and Radiocommunication Station; and
- (i) Accessory uses customarily ancillary to the uses permitted in this Section 2.2.

### Conditions of Use

- 3. The design and lay-out of at least 25% of the dwelling units must:
  - (a) be suitable for family housing;
  - (b) include two or more bedrooms; and
  - (c) comply with Council's "High Density Housing for Families with Children Guidelines".

### Floor Area

- 4.1 Computation of floor space ratio must assume that the site consists of 1,940.5 m<sup>2</sup>, being the site size at the time of the application for the rezoning evidenced by this By-law.
- 4.2 Floor space ratio for all uses must not exceed 3.37.
- 4.3 Computation of floor area must include all floors of all buildings, having a minimum ceiling height of 1.2 m, including earthen floors and accessory buildings, both above and below ground level, to be measured to the extreme outer limits of the building.
- 4.4 Computation of floor area must exclude:
  - (a) open residential balconies or sun decks and any other appurtenances which, in the opinion of the Director of Planning, are similar to the foregoing, provided that the total area of all exclusions does not exceed 8% of the residential floor area being provided;
  - (b) enclosed residential balconies, provided that the Director of Planning first considers all applicable policies and guidelines adopted by Council and approves the design of any balcony enclosure, subject to the following:
    - (i) the total area of all open and enclosed balcony or sun deck exclusion does not exceed 8% of the residential floor area being provided, and

- (ii) no more than 50% of the excluded balcony floor area may be enclosed;
- (c) patios and roof gardens, provided that the Director of Planning first approves the design of sunroofs and walls;
- (d) where floors are used for off-street parking and loading, the taking on or discharging of passengers, bicycle storage, heating and mechanical equipment or uses which in the opinion of the Director of Planning are similar to the foregoing, those floors or portions thereof so used which:
  - (i) are at or below the base surface, provided that the maximum exclusion for a parking space shall not exceed 7.3 m in length, or
  - (ii) are above the base surface and where developed as off-street parking are located in an accessory building situated in the rear yard, provided that the maximum exclusion for a parking space shall not exceed 7.3 m in length;
- (e) amenity areas, including child day care facilities, recreational facilities and meeting rooms accessory to a residential use, to a maximum total area of 10% of the total permitted floor area, provided that for child day care facilities the Director of Planning, on the advice of the Director of Social Planning, is satisfied that there is a need for a day care facility in the immediate neighbourhood; and
- (f) all residential storage space above or below base surface, except that if the residential storage space above base surface exceeds 3.7 m<sup>2</sup> per dwelling unit, there will be no exclusion for any of the residential storage space above base surface for that unit.

4.5 The use of floor area excluded under section 4.4 must not include any purpose other than that which justified the exclusion.

### **Building Height**

5.1 Building height, measured from base surface, must not exceed 18.5 m.

### **Horizontal Angle of Daylight**

6.1 Each habitable room must have at least one window on an exterior wall of a building.

6.2 The location of each such exterior window must allow a plane or planes extending from the window and formed by an angle of 50 degrees, or two angles with a sum of 70 degrees, to encounter no obstruction over a distance of 24.0 m.

6.3 Measurement of the plane or planes referred to in section 6.2 must be horizontally from the centre of the bottom of each window.

- 6.4 If:
- (a) the Director of Planning or Development Permit Board first considers all the applicable policies and guidelines adopted by Council; and
  - (b) the minimum distance of the unobstructed view is not less than 3.7 m;

the Director of Planning or Development Permit Board may relax the horizontal angle of daylight requirement.

6.5 An obstruction referred to in section 6.2 means:

- (a) any part of the same building including permitted projections; or
- (b) the largest building permitted under the zoning on any site adjoining CD-1 (558).

6.6 A habitable room referred to in section 6.1 does not include:

- (a) a bathroom; or
- (b) a kitchen whose floor area is the lesser of:
  - (i) 10% or less of the total floor area of the dwelling unit, or
  - (ii) 9.3 m<sup>2</sup>.

**Acoustics**

7. A development permit application for dwelling uses shall require evidence in the form of a report and recommendations prepared by persons trained in acoustics and current techniques of noise measurement, demonstrating that the noise levels in those portions of the dwelling units listed below shall not exceed the noise levels expressed in decibels set opposite such portions of the dwelling units. For the purposes of this section, the noise level is the A-weighted 24-hour equivalent (Leq) sound level and will be defined simply as the noise level in decibels.

<b>Portions of dwelling units</b>	<b>Noise levels (Decibels)</b>
Bedrooms	35
Living, dining, recreation rooms	40
Kitchen, bathrooms, hallways	45

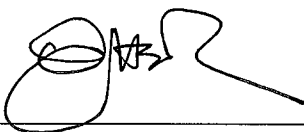
**Severability**

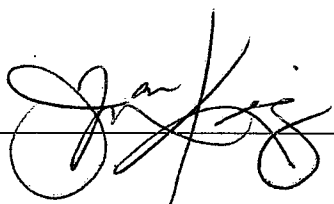
8. A decision by a court that any part of this By-law is illegal, void, or unenforceable severs that part from this By-law, and is not to affect the balance of this By-law.

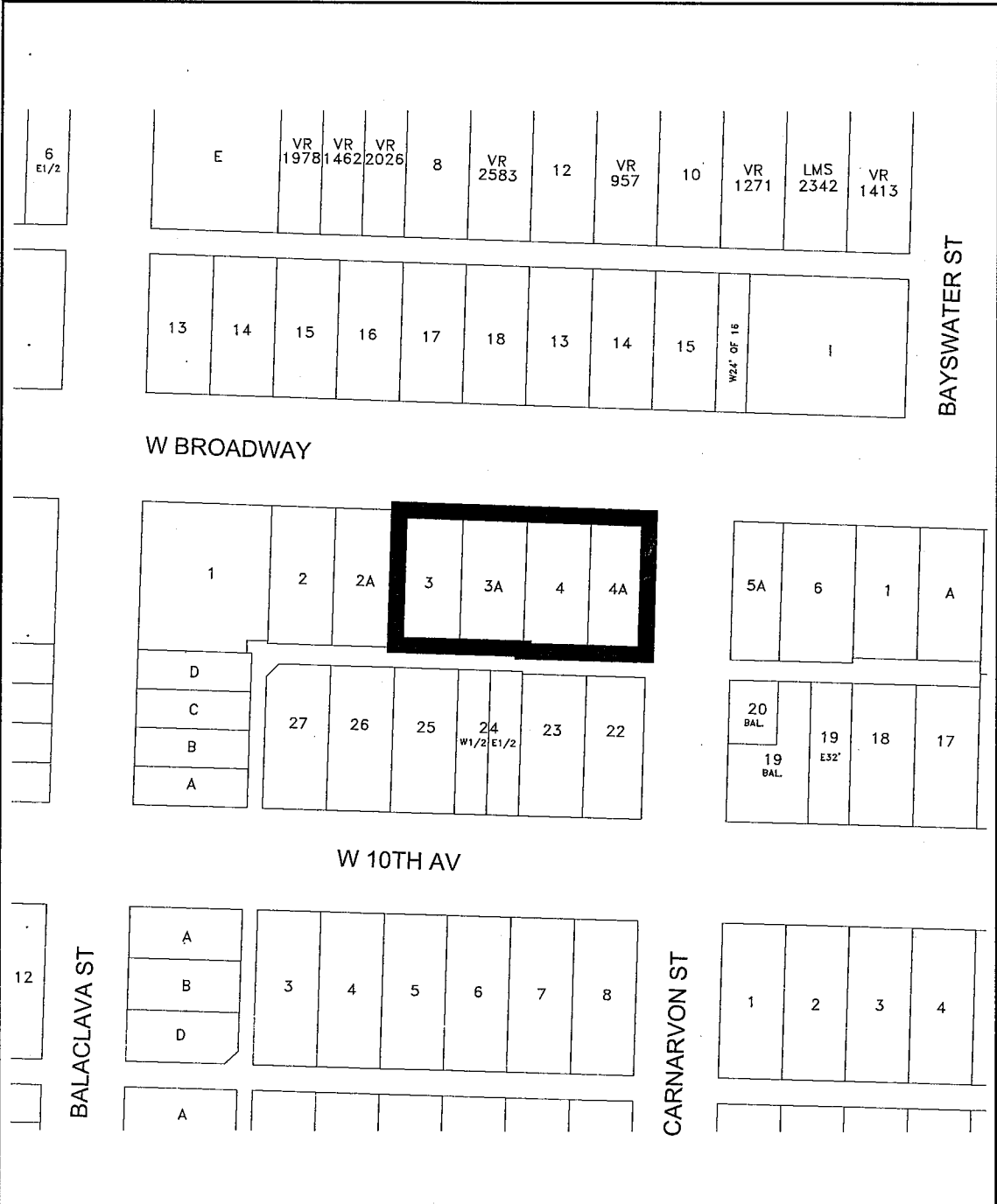
**Force and Effect**

9. This By-law is to come into force and take effect on the date of its enactment.

ENACTED by Council this 17<sup>th</sup> day of December, 2013

  
\_\_\_\_\_  
Mayor

  
\_\_\_\_\_  
City Clerk



The properties outlined in black (  ) are rezoned:  
 From **C-2C** to **CD-1**

**Z-659 (a)**

RZ - 3002-3036 West Broadway

map: 1 of 1  
 scale: NTS

