

ARBUTUS CORRIDOR
OFFICIAL DEVELOPMENT PLAN
(Adopted by By-law No. 8249, July 25, 2000)

Table of Contents

	Page
Section 1	
Background	2
1.1 Application.....	2
1.2 Intent	2
Section 2	
Designations	2
2.1 Designations for the Arbutus Corridor.....	2
2.2 Affordable, Rental and Special Needs Housing Policies	3

Arbutus Corridor Official Development Plan

Section 1 Background

1.1 Application

This plan applies to those lands in the City of Vancouver described as the Arbutus Corridor within the boundaries shown on Maps 1 to 23 attached to this plan.

1.2 Intent

The intent of this plan is to provide a context for the future of the Arbutus Corridor.

The Arbutus Corridor has been used for many years for a rail line and this plan accommodates this use, but also provides for a variety of other uses.

This plan is derived from broad public processes associated with the following existing City plans:

- (a) CityPlan,
- (b) Vancouver Transportation Plan, and
- (c) Vancouver Greenways Plan,

which plans determined the importance of providing corridors for improved rapid transit and opportunities for increased walking and biking as part of the City's transportation network.

Section 2 Designations

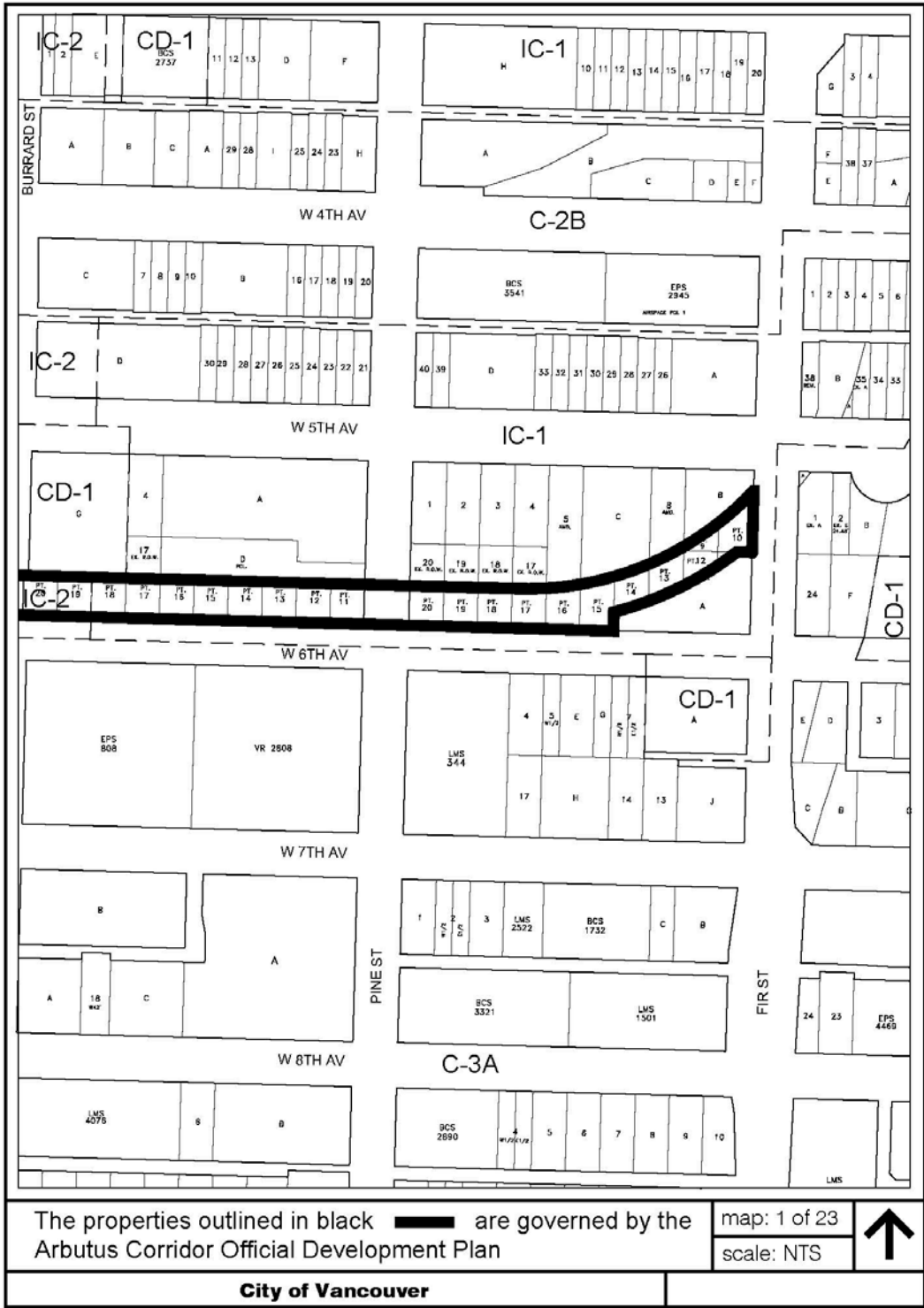
2.1 Designations for the Arbutus Corridor

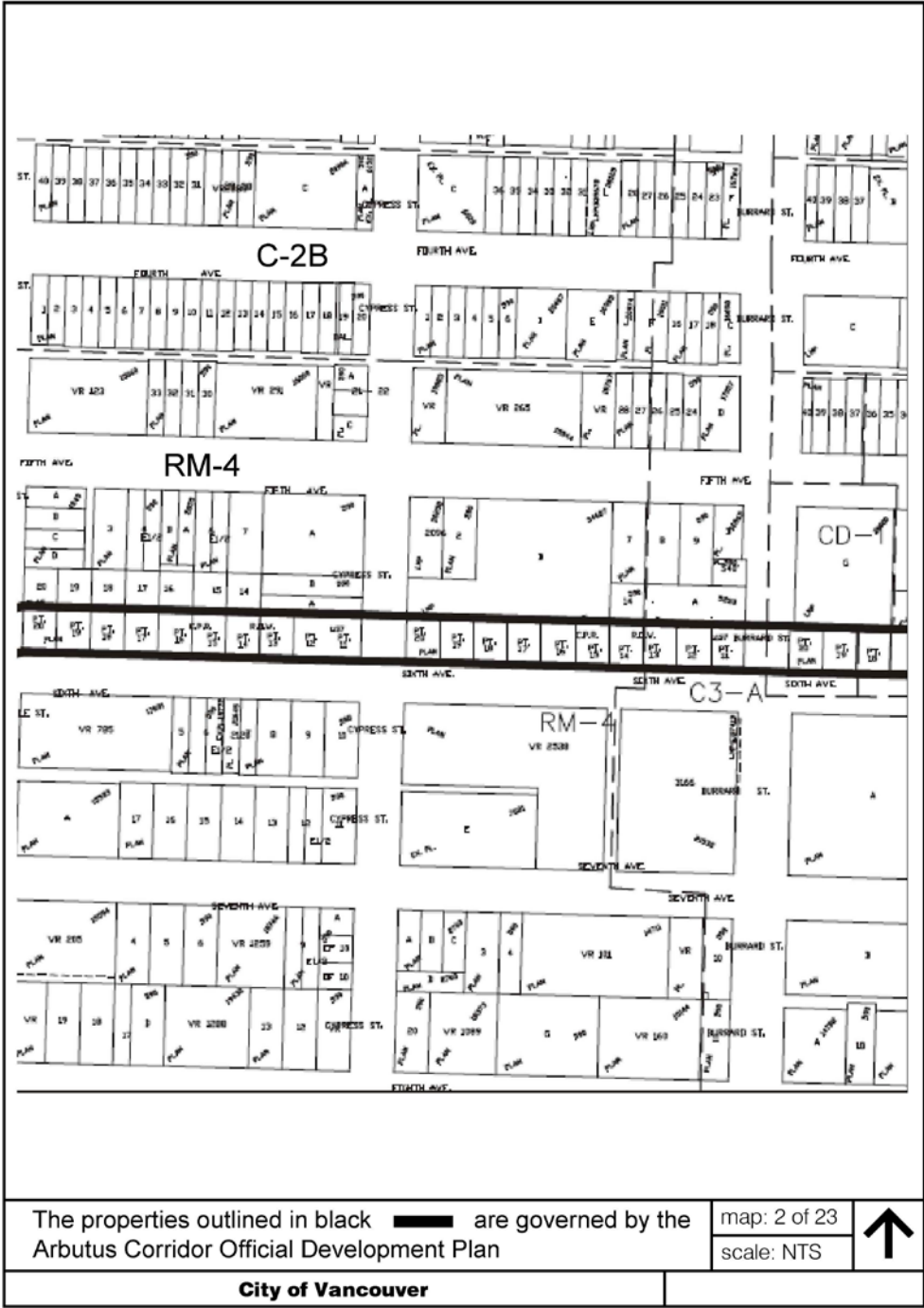
This plan designates all of the land in the Arbutus Corridor for use only as a public thoroughfare for the purpose only of:

- (a) transportation, including without limitations:
 - (i) rail;
 - (ii) transit; and
 - (iii) cyclist paths
 but excluding:
 - (iv) motor vehicles except on City streets crossing the Arbutus Corridor; and
 - (v) any grade-separated rapid transit system elevated, in whole or in part, above the surface of the ground, of which one type is the rapid transit system know as "SkyTrain" currently in use in the Lower Mainland;
- (b) greenways, including without limitation:
 - (i) pedestrian paths, including without limitation urban walks, environmental demonstration trails, heritage walks and nature trails; and
 - (ii) cyclist paths.

2.2 Affordable, Rental and Special Needs Housing Policies

The City promotes the supply of affordable housing, rental housing and special needs housing through a number of initiatives and does not intend to promote, permit or provide for such housing within the Arbutus Corridor.



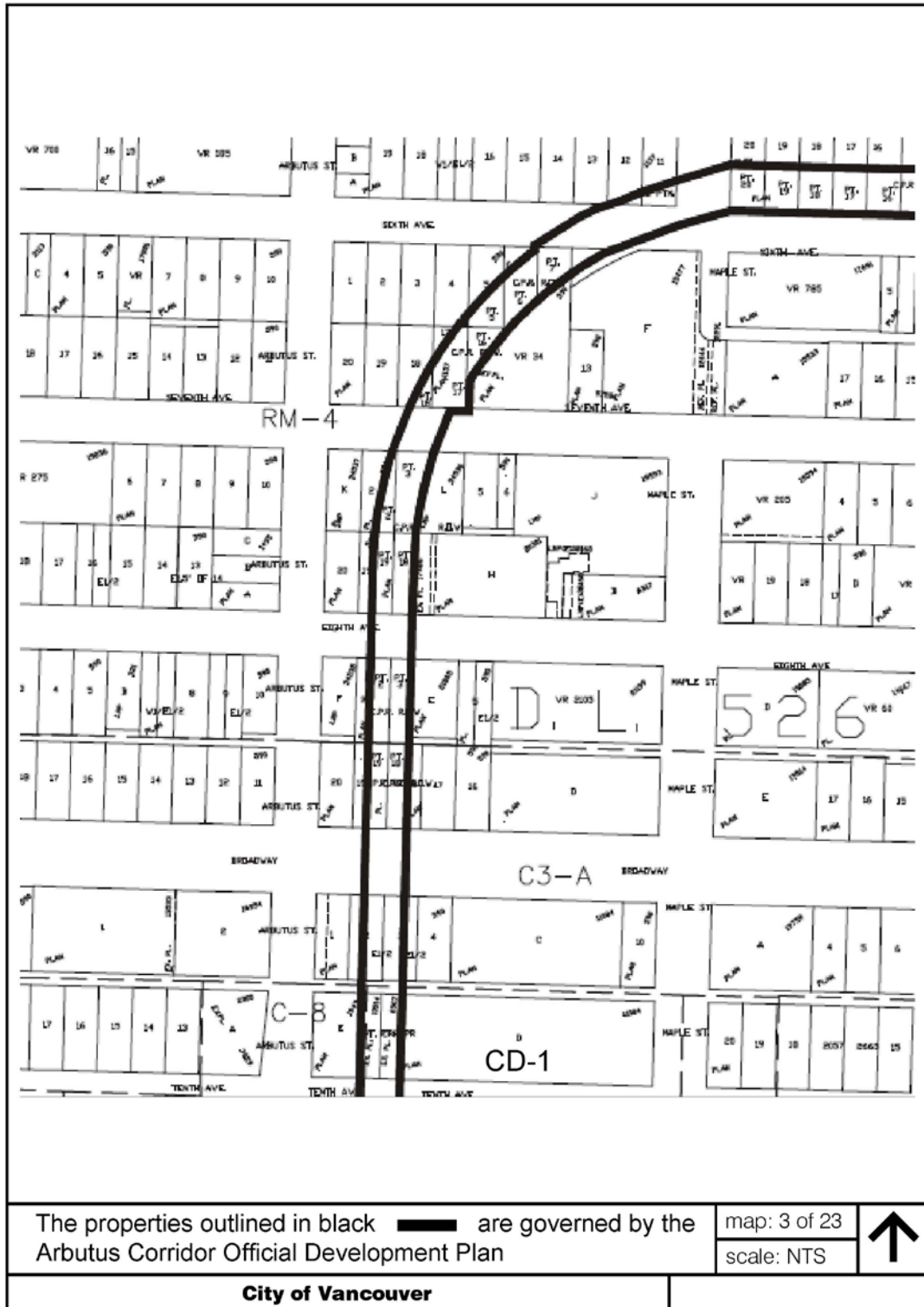


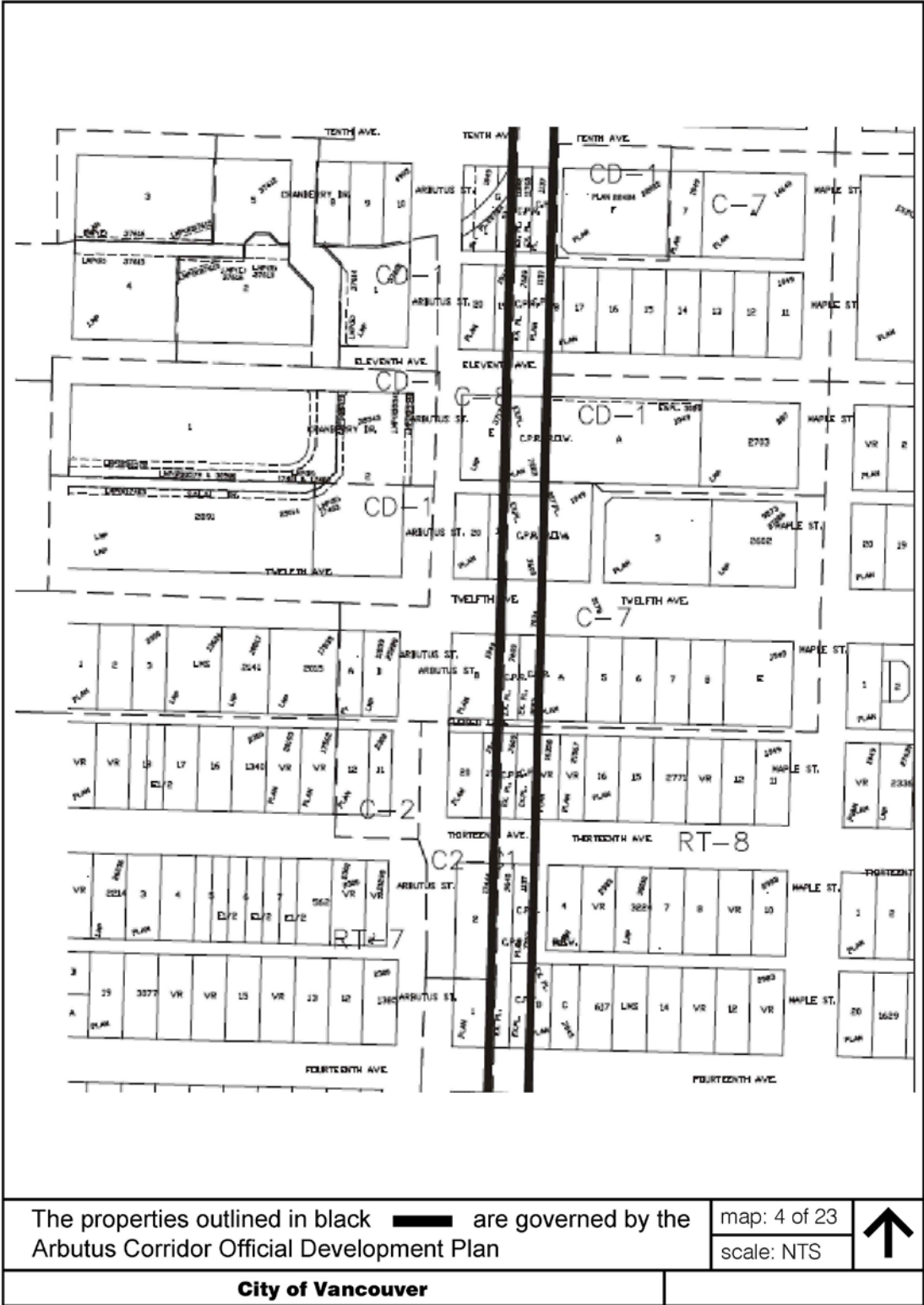
The properties outlined in black are governed by the Arbutus Corridor Official Development Plan

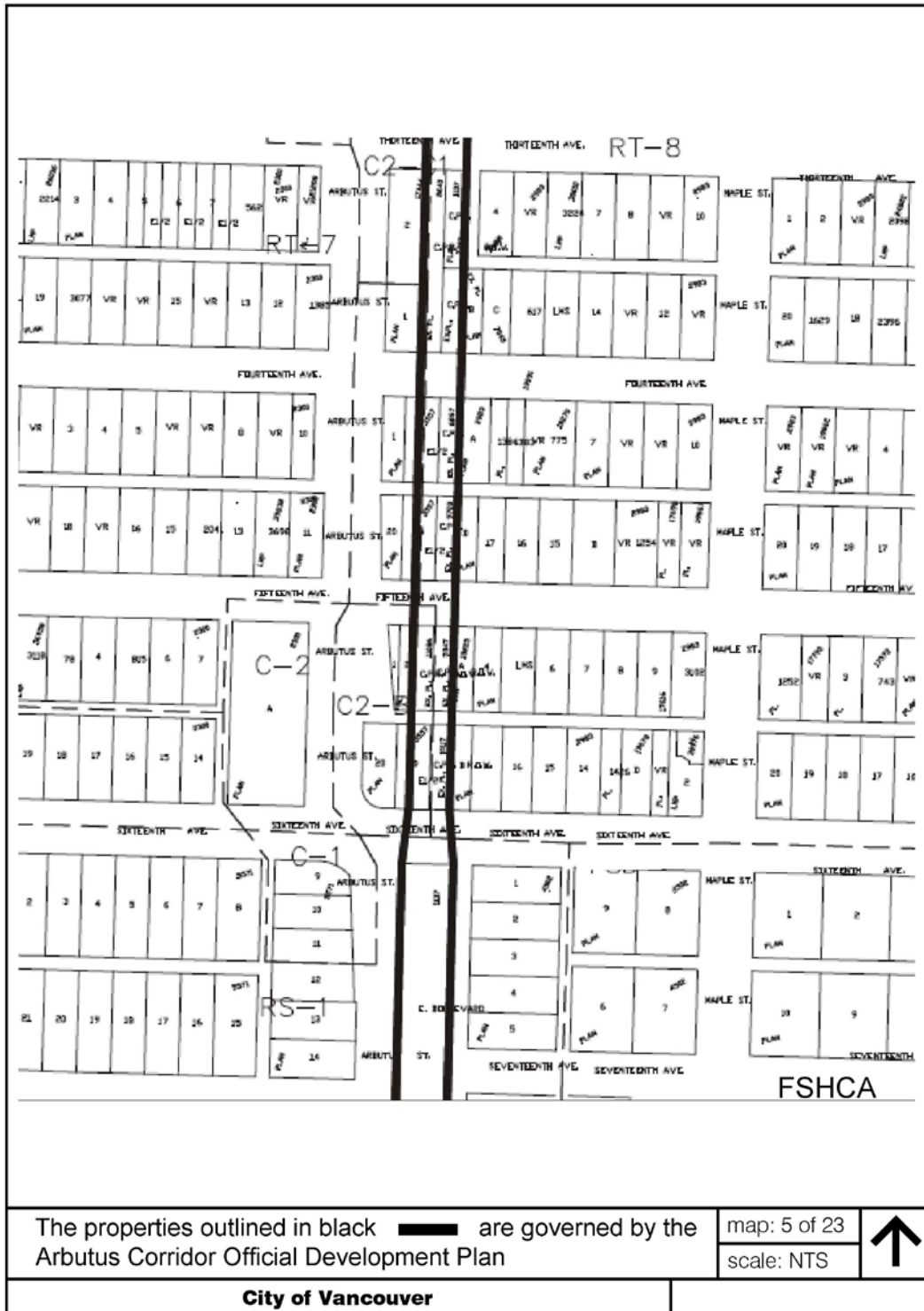
map: 2 of 23
scale: NTS



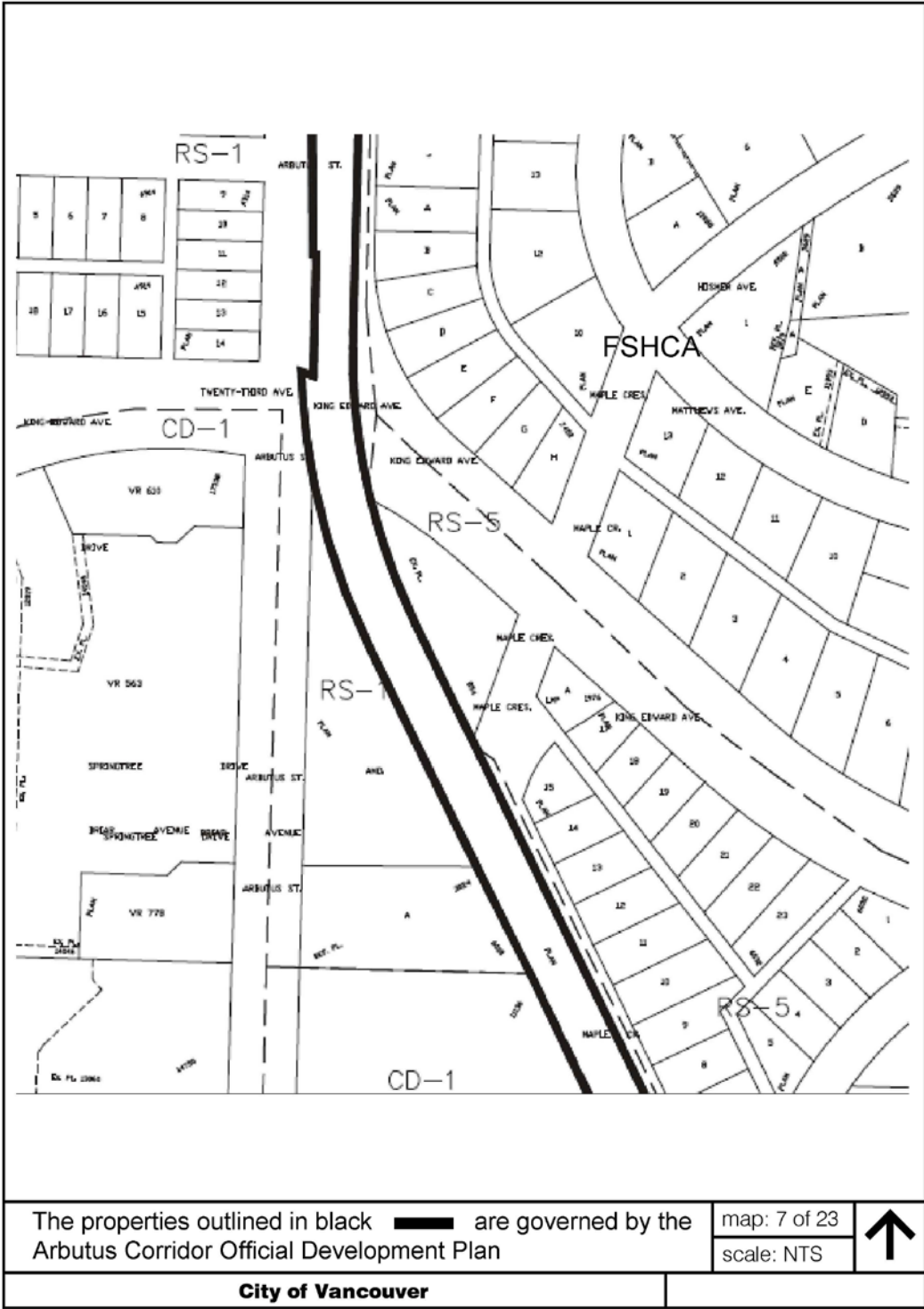
City of Vancouver









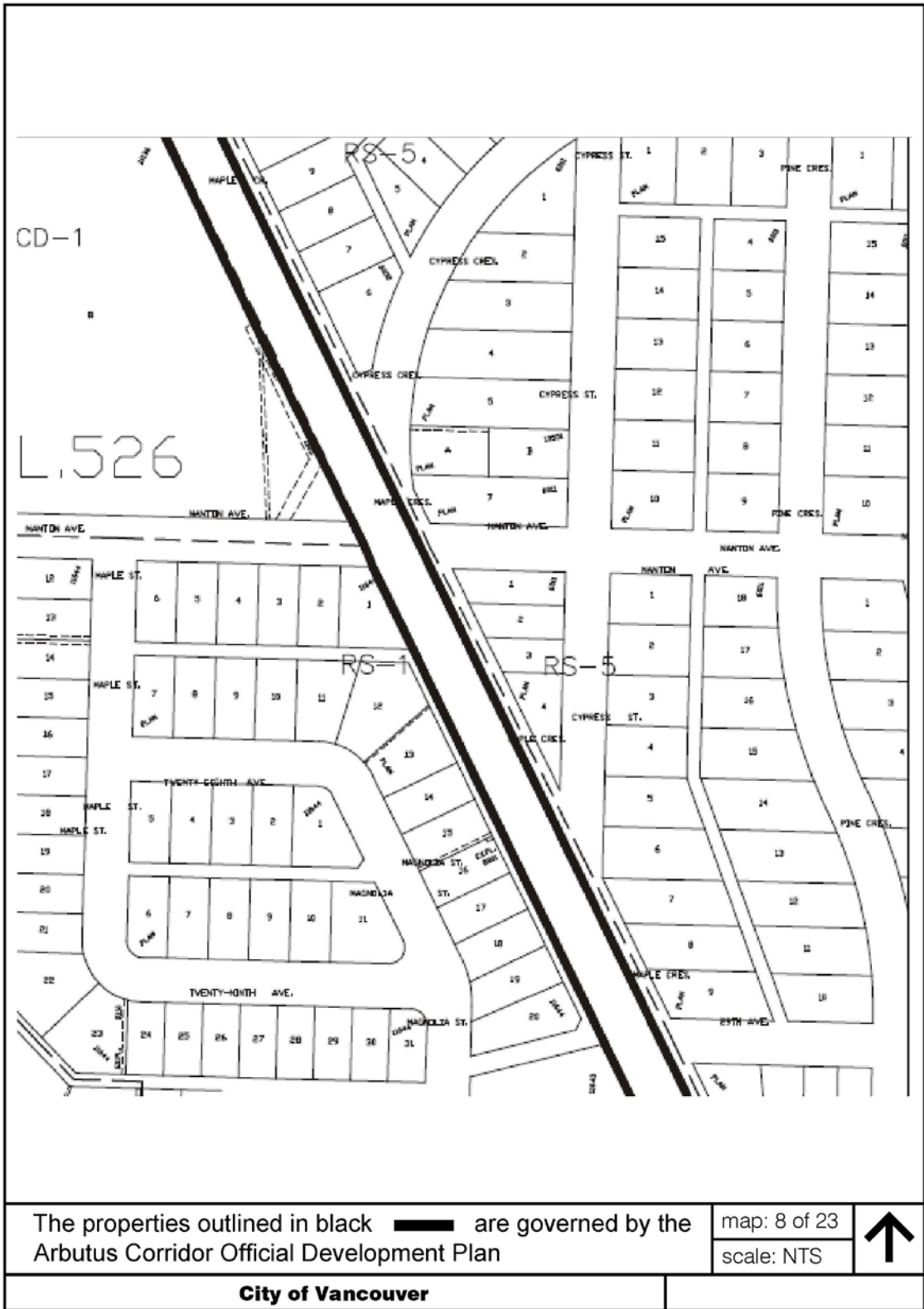


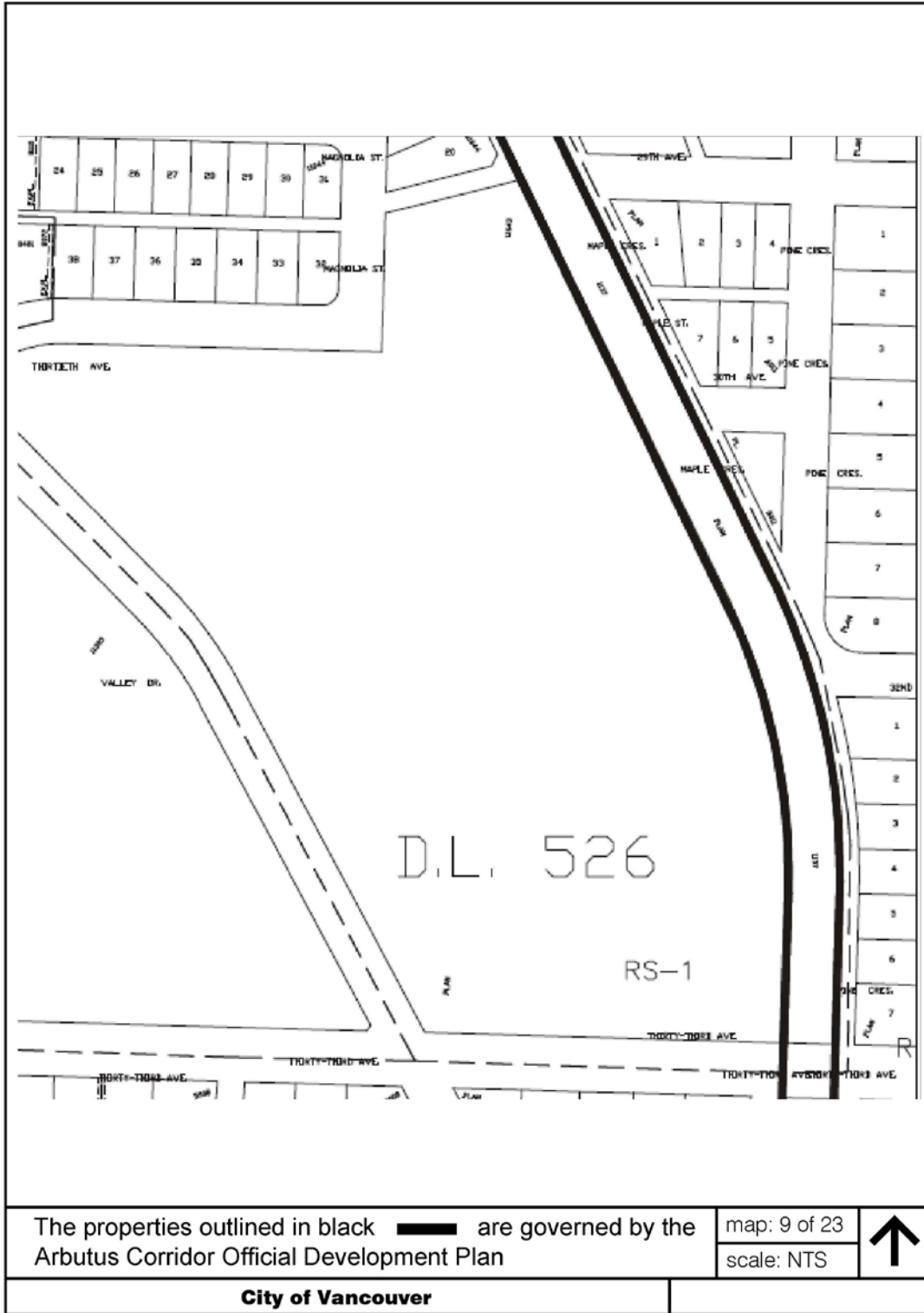
The properties outlined in black **█** are governed by the Arbutus Corridor Official Development Plan

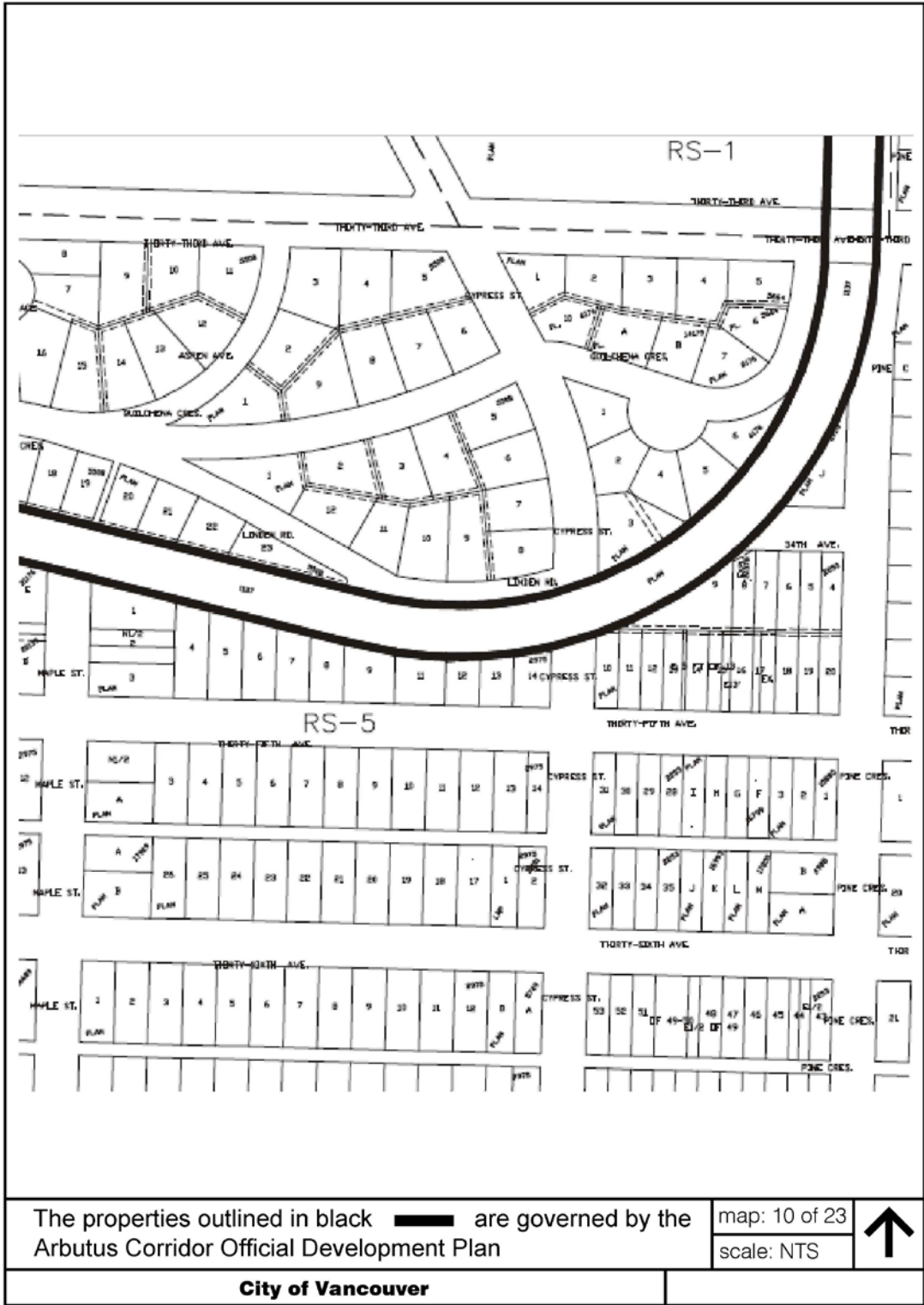
map: 7 of 23
scale: NTS



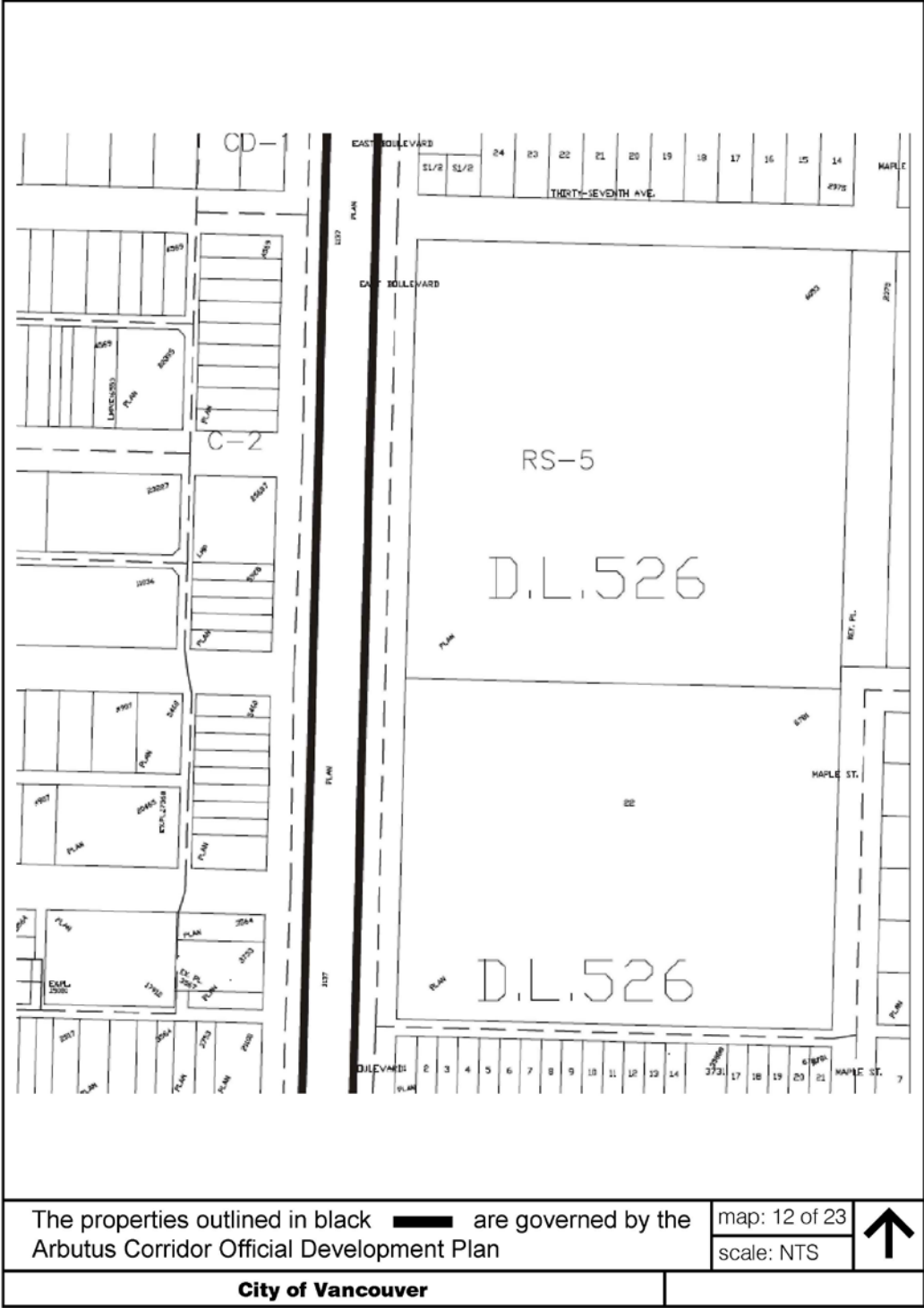
City of Vancouver









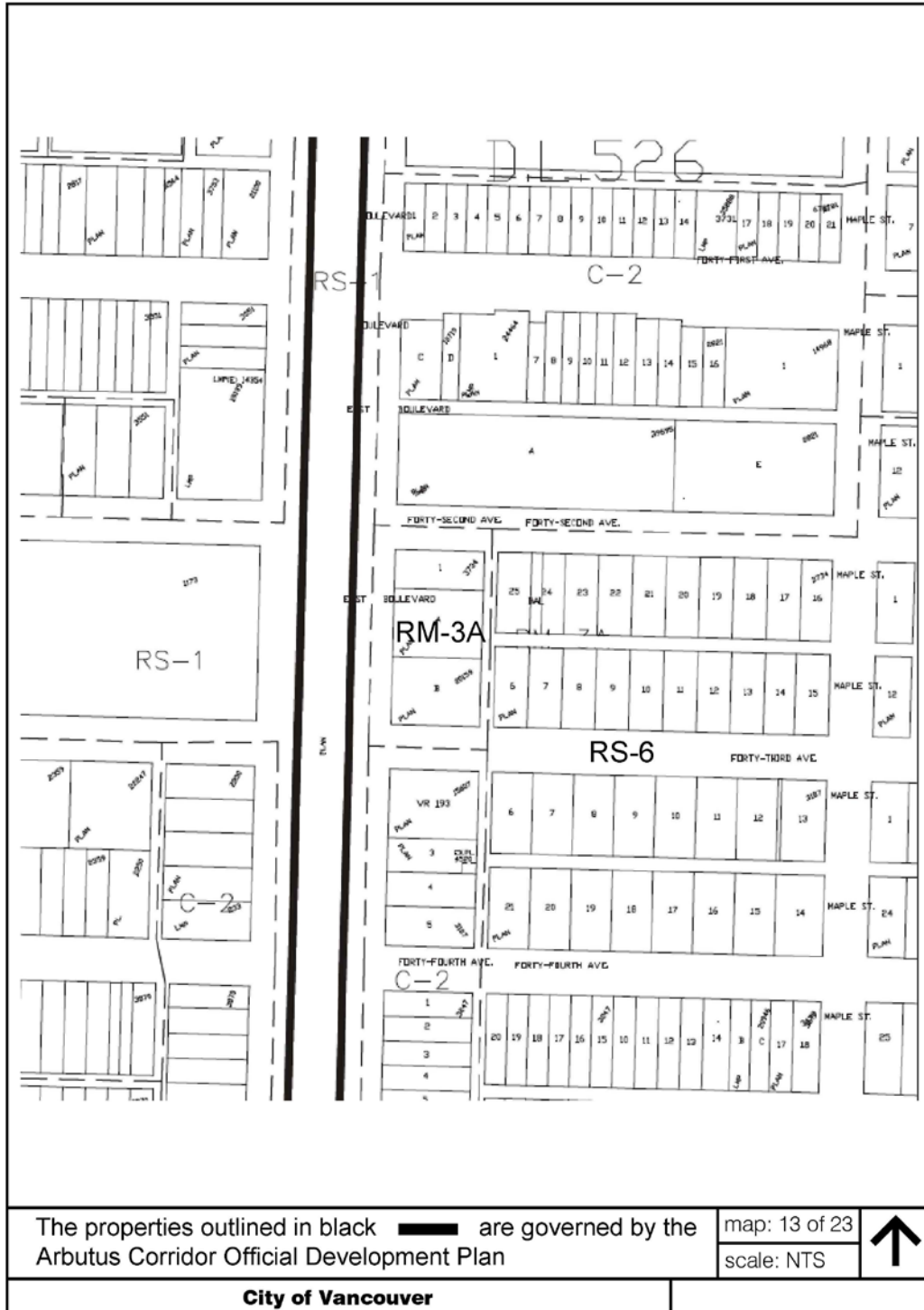


The properties outlined in black are governed by the Arbutus Corridor Official Development Plan

map: 12 of 23
scale: NTS

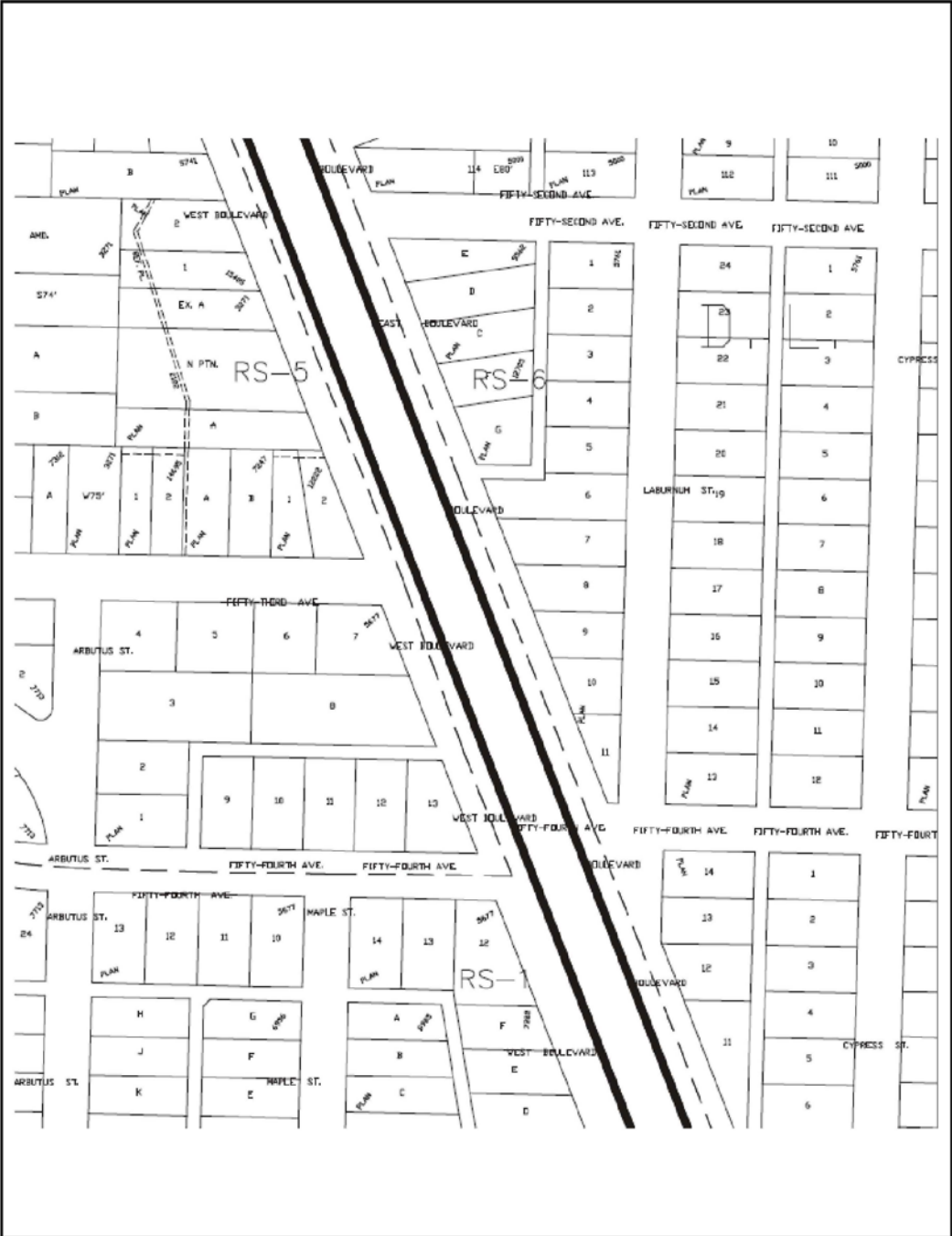


City of Vancouver







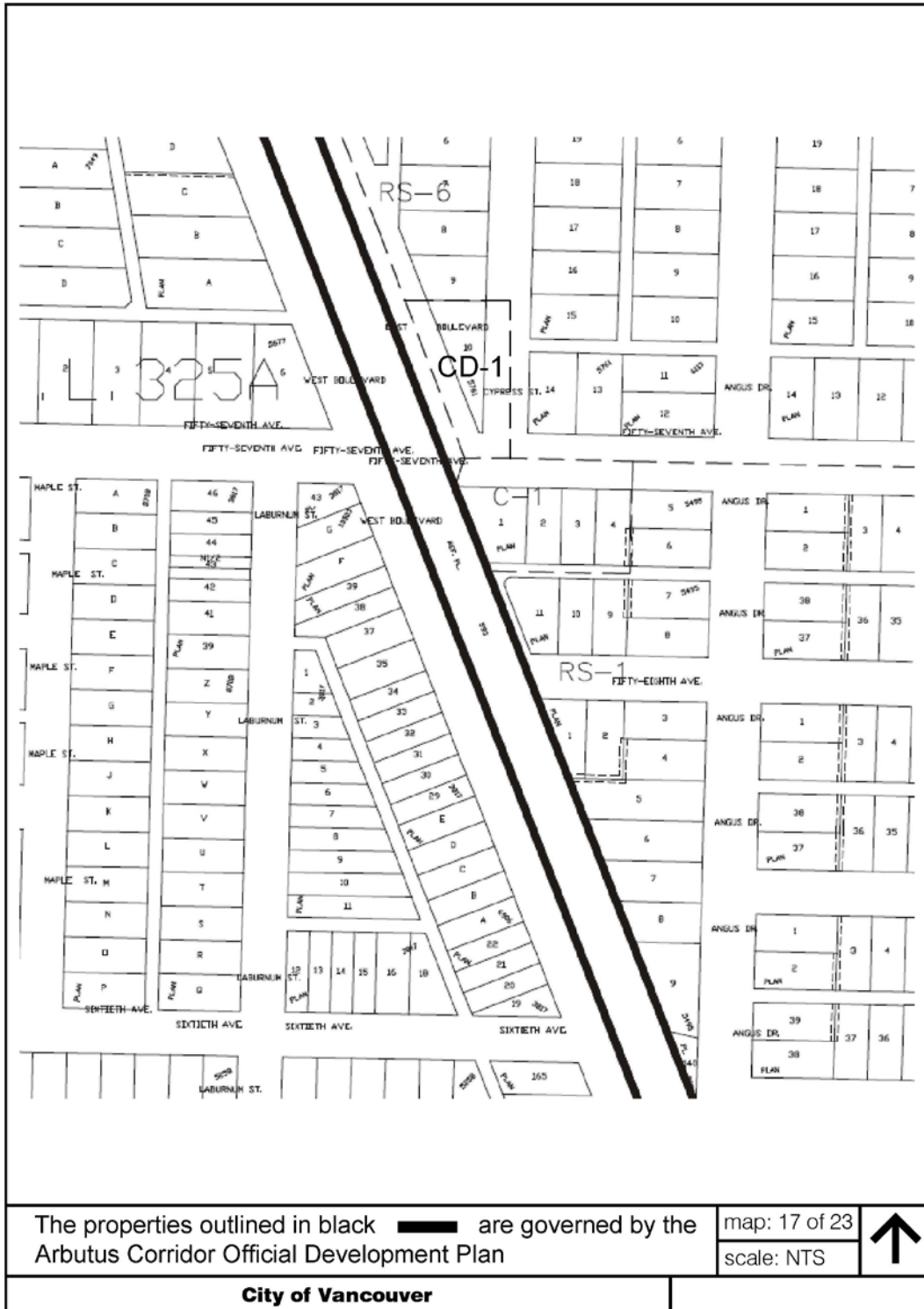


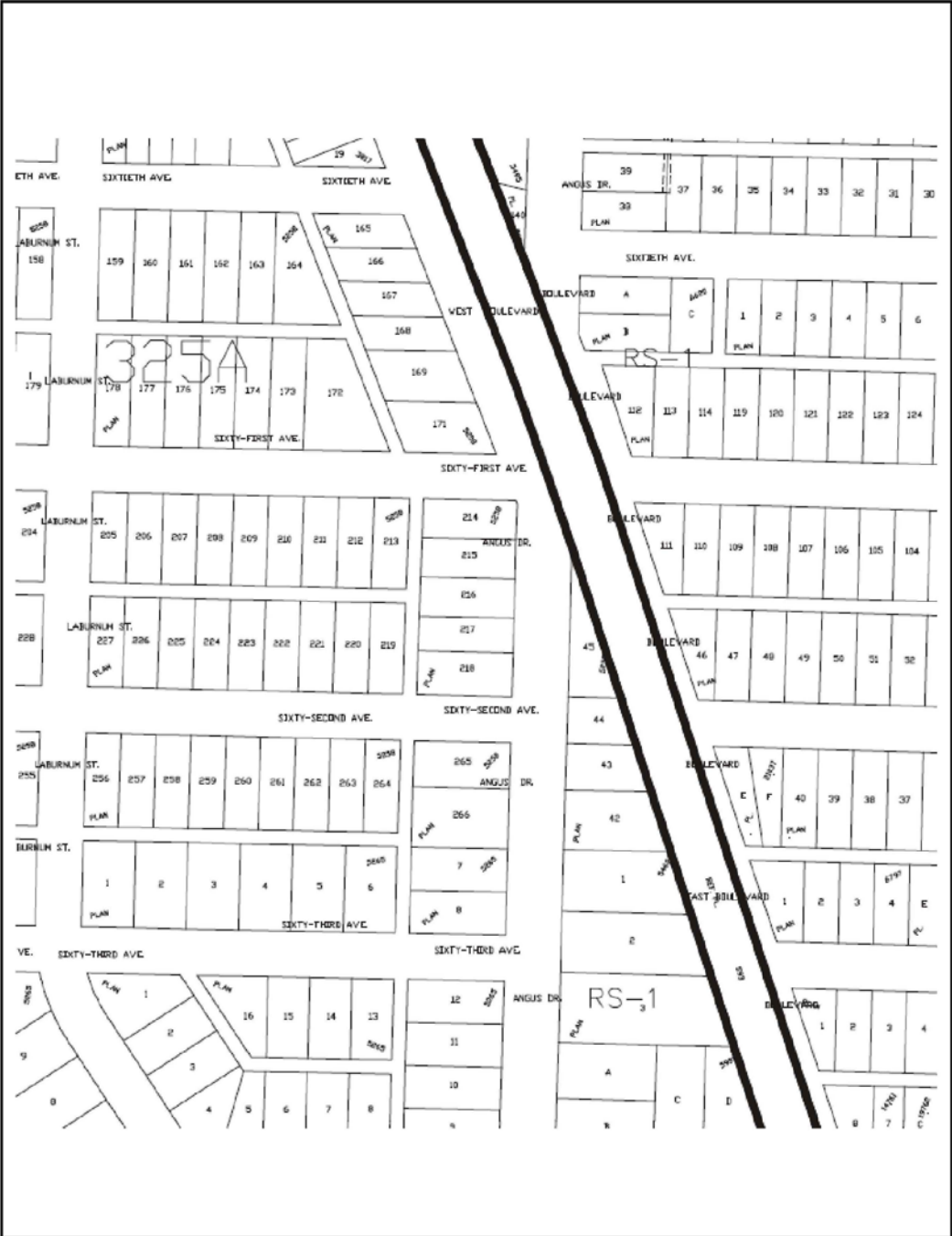
The properties outlined in black are governed by the Arbutus Corridor Official Development Plan

map: 16 of 23
scale: NTS



City of Vancouver





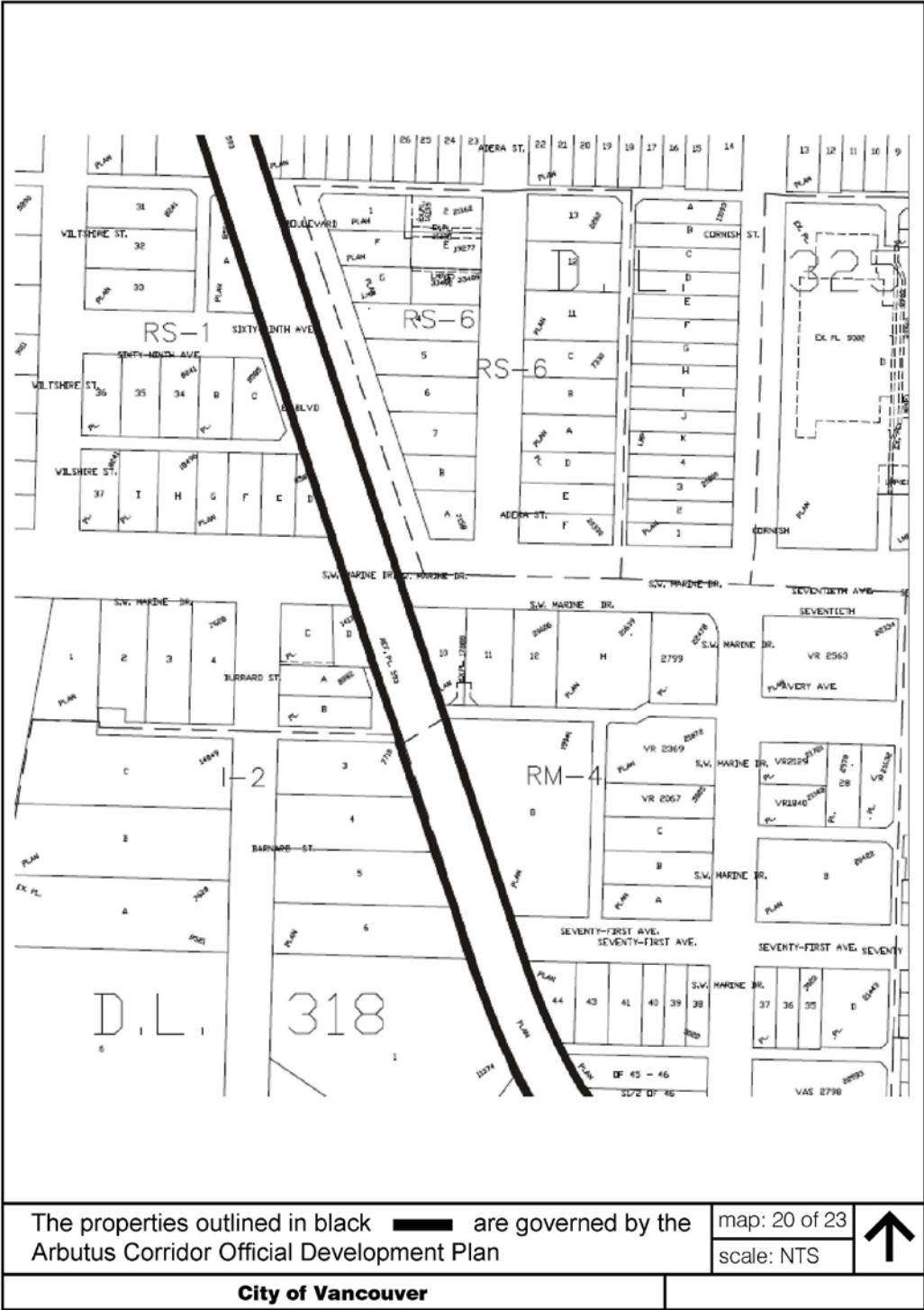
The properties outlined in black are governed by the Arbutus Corridor Official Development Plan

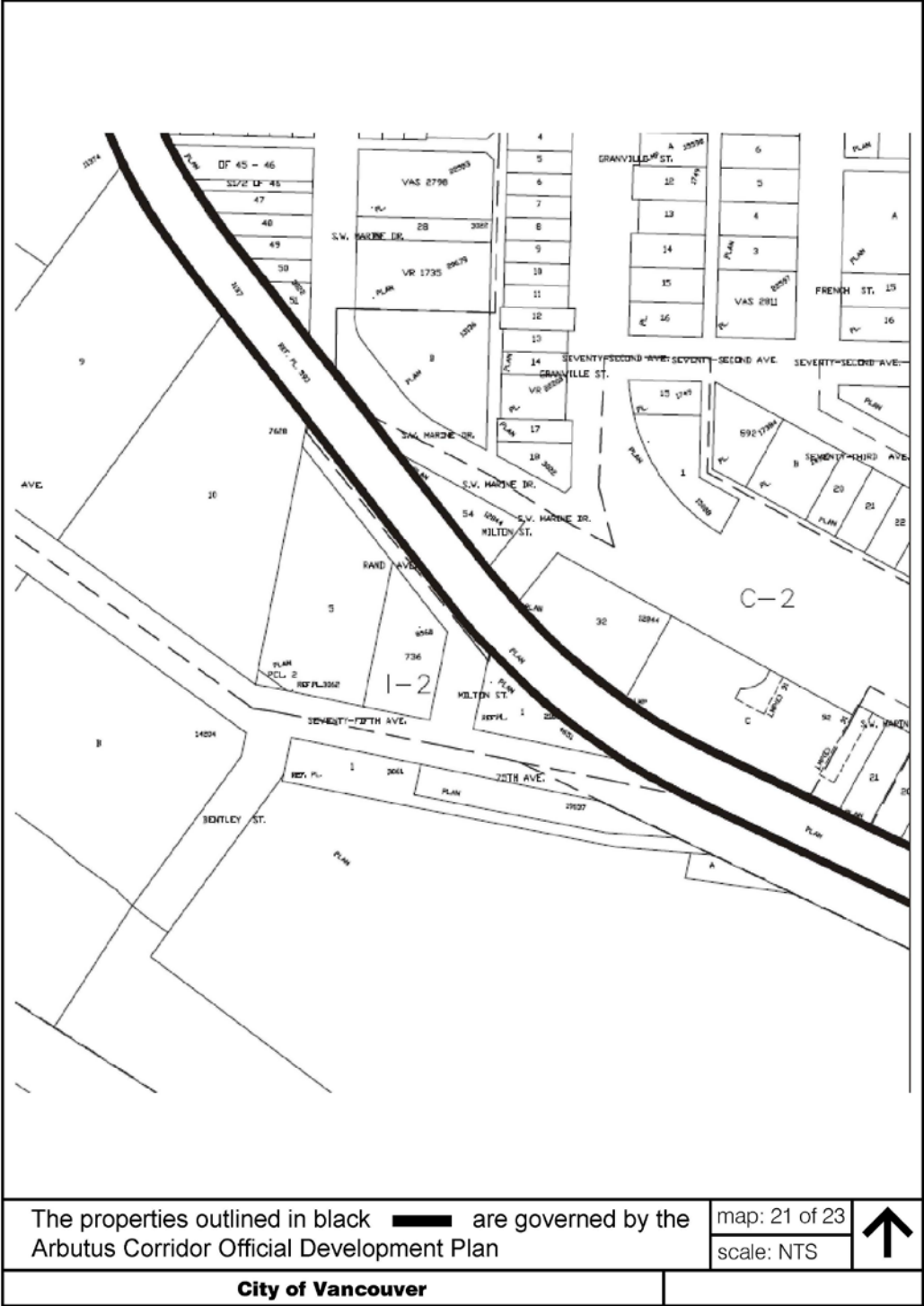
map: 18 of 23
scale: NTS

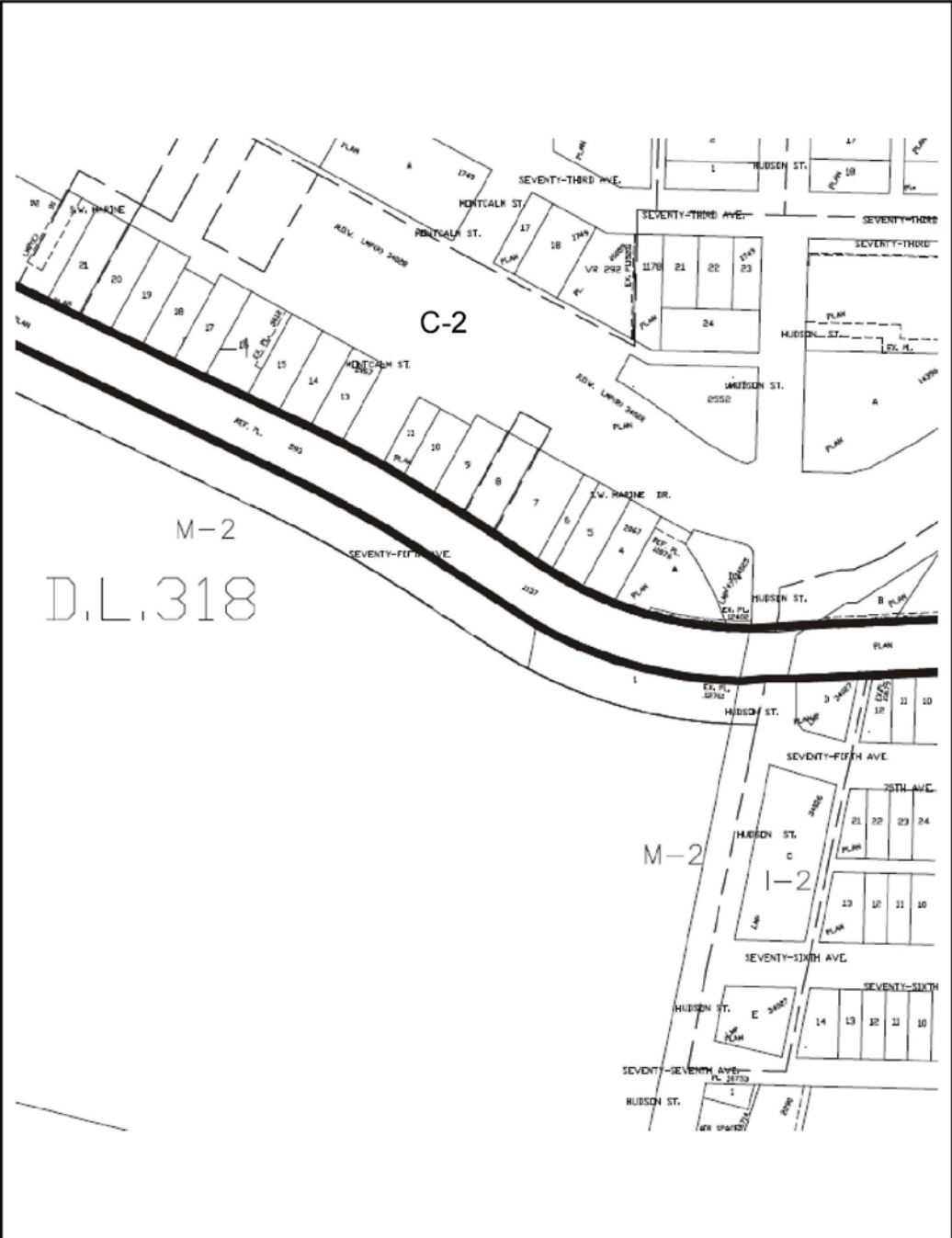


City of Vancouver









The properties outlined in black  are governed by the Arbutus Corridor Official Development Plan

map: 22 of 23
scale: NTS



City of Vancouver

